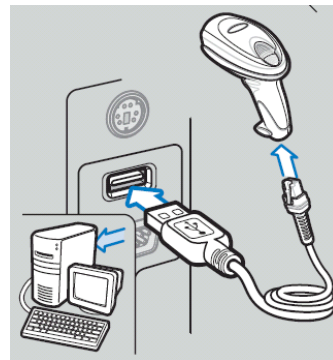


Configuring the Symbol DS6707 Bar Code Scanner for Use with the DPAS Maintenance and Utilization (M&U) Module

For the Symbol DS6707 Bar Code Scanner to work with the M&U module it must first be configured to scan properly. Complete the following steps to configure your scanner.

1. Plug the bar code scanner into the Universal Serial Bus (USB) port on your computer.



2. Once the scanner has initiated, scan the following three barcodes:



Scan First – Set Defaults



Scan Second – Enable Function Key Mapping



Scan Third – Enable Code 39 Full ASCII (01h)

Your scanner can now be used to scan the bar codes on the top of the various forms within the M&U module.